

FAMILY - Dendrophylliidae

Encrusting



Turbinaria patula

DOMINATE MIDSHELF
ISLAND REEFS



Turbinaria radicalis



Turbinaria sp.



Turbinaria frondens



Turbinaria mesenterina

FAMILY - Acroporidae



Acropora plate



Montipora encrusting



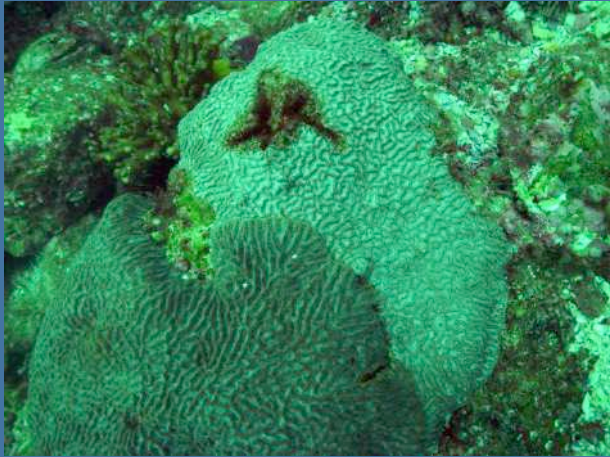
Acropora branching

FAMILY - Pocilloporidae

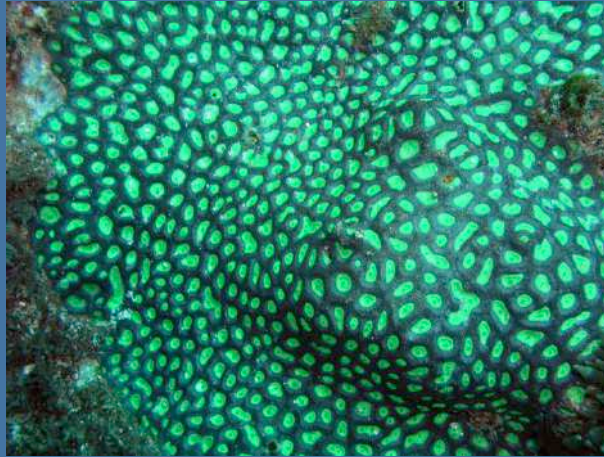


Pocillopora damicornis

FAMILY - Faviidae



Goniastrea spp.



Favites abdita



Faviid spp.



Not Faviids



FAMILY - Poritidae



Porites sp.



Goniopora spp.

Soft Corals



Coral health surveys

Tips for monitoring corals

- Maintain excellent buoyancy control
- Take your time and only dive to your capabilities
- Stay off the bottom
- Maintain a head down fins up body position
- Try not to touch the corals – polyps retract causing changes in pigment intensity

